



10, Weymouth Street,
, W1W

£1,550 Per Week,

NAPIER WATT

T: 0207 935 0011
E: enquiries@napierwatt.co.uk
W: napierwatt.co.uk

35 Berkeley Square, Mayfair, London, W1J 5BF







Description

A bright and spacious three bedroom, three bathroom apartment with life access, located in the heart of Marylebone. The property features a principle bedroom with an en-suite shower room, a second bedroom with an en-suite, a third bedroom, a family bathroom, a separate integrated kitchen and a large reception room that opens onto a private balcony. PHOTOS FOR REFERENCE

3 Bedroom : 3 Bathroom : Porter : Lift : Balcony : Westminster Council Tax Band G : EPC Rating C

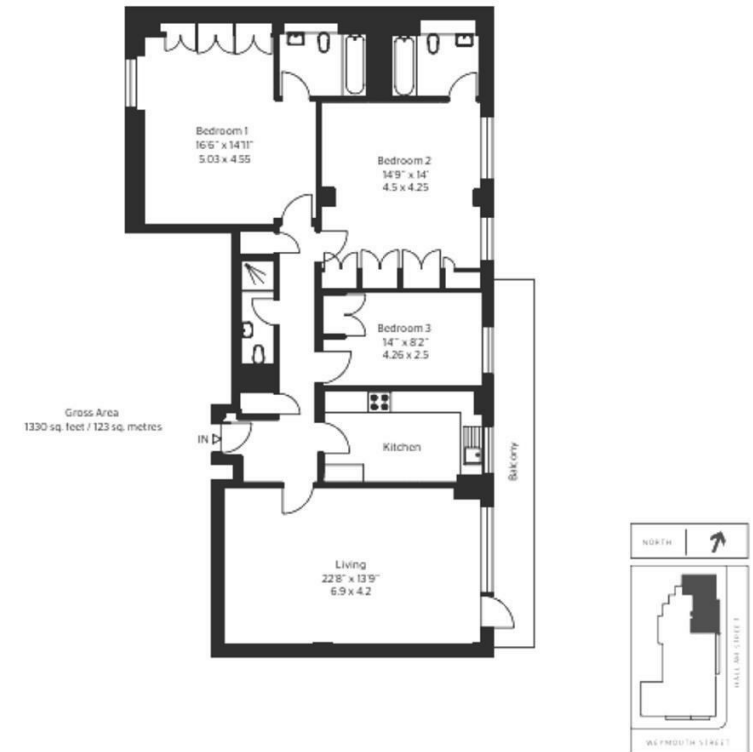
Key Features

- BALCONY
- LIFTS
- FURNISHED
- 24HR PORTER SERVICE
- SECOND FLOOR
- EASY ACCESS TO MARLEYBONE VILLAGE

Terms

Fees & Charges: Tenancies exceeding £100,000 Per annum £480 inc VAT, Tenancies where a company is a tenant £480 Inc VAT.

3 Bedroom



IMPORTANT: We would inform prospective purchasers that these sales particulars have been prepared as a general guide only. A detailed survey has not been carried out, nor the services, appliances and fittings tested. Room sizes should not be relied upon for furnishing purposes and are approximate. If floor plans are included, they are for guidance only and illustration purposes only and may not be to scale. If there are any important matters likely to affect your decision to buy, please contact us before viewing the property.